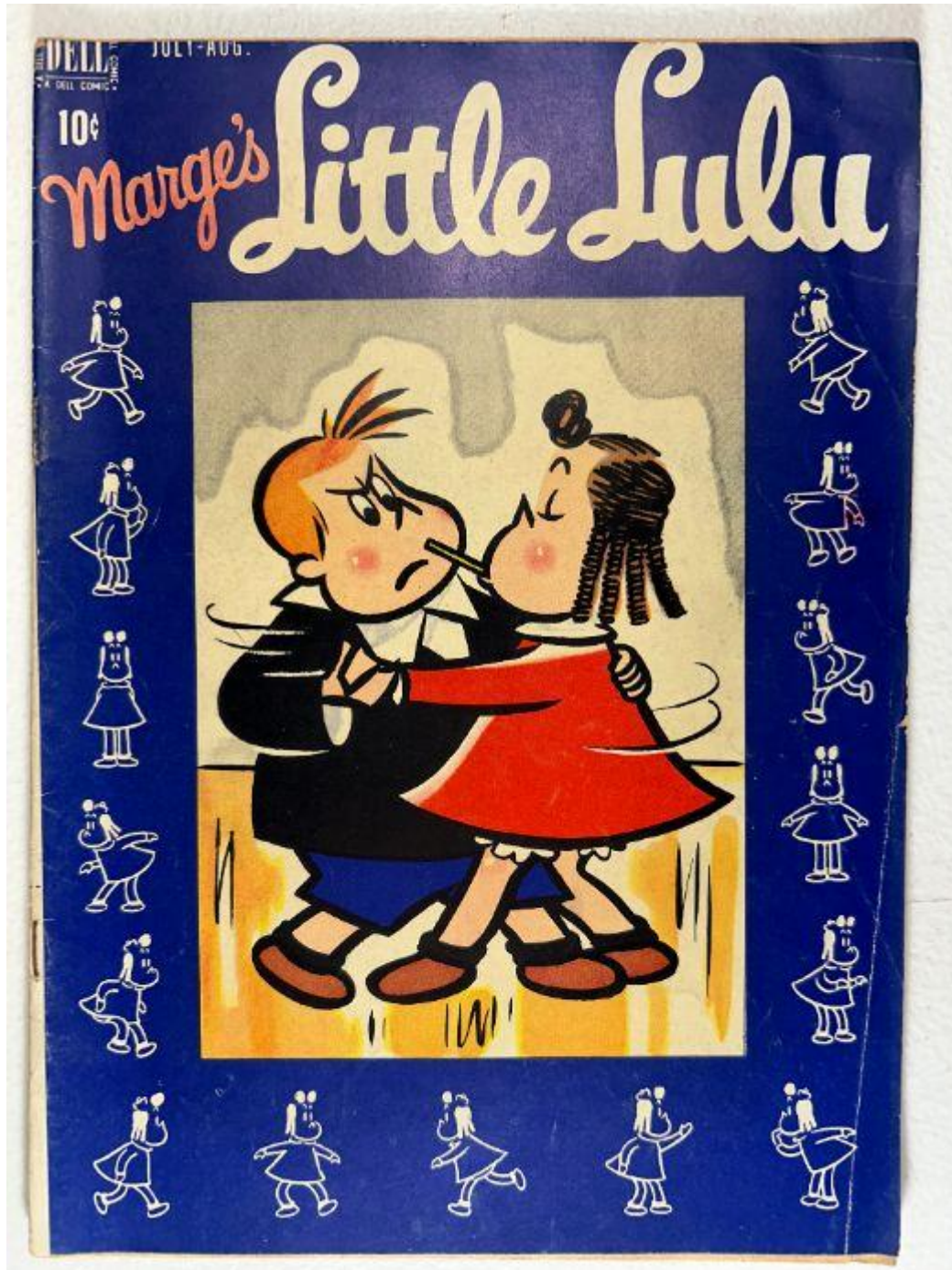


MARGE'S LITTLE LULU VOL. 1 NO. 4 – JULY 1948

## Front Cover Observations

*Marge's Little Lulu Vol. 1 No. 4 (July 1948)*



## Photo Validation

- The photo is clear, evenly lit, fully framed, and adequate for evaluation.

## Overall Scene & Composition

- The cover artwork depicts two illustrated characters dancing closely together within a central cream-colored panel.
- One character wears a dark jacket and blue trousers, while the other wears a bright red dress, creating a strong color contrast.
- The figures are shown in mid-movement with bent knees and angled feet, suggesting lively motion.
- The central image is surrounded by a wide blue border decorated with repeated small white line-art figures in various dancing poses.
- The background behind the dancing figures shows vertical yellow and orange brush-like strokes, adding energy to the scene.

## Condition & Surface Characteristics

- Moderate spine wear is visible along the left edge, including stress lines and light color thinning.
- Edge wear is present along the top and right margins, with mild corner rounding.
- Light surface scuffing and small abrasions are visible within the blue border area.
- No large tears or missing sections are visible on the cover.

## Color & Printing Quality

- Colors remain bold and well-saturated, particularly the deep blue border and red dress.
- Linework is clean and sharply printed with no visible misregistration.
- The cream central panel shows even ink coverage with minimal fading.

## Paper Condition

- Light to moderate age toning is visible across the cover, more pronounced near the edges.
- No moisture rippling, staining, or surface lifting is evident.
- The paper appears flexible with no signs of brittleness.

## Overall Impression

A visually striking early-period cover with strong color contrast and dynamic artwork. Moderate spine and edge wear and light surface scuffing are present, but the cover remains structurally intact and appealing for a 1948 Golden Age issue.

# Inside Front Cover Observations

Marge's Little Lulu Vol. 1 No. 4 (July 1948)



## Photo Validation

- The photo is clear, evenly lit, fully framed, and adequate for evaluation.

## Overall Scene & Composition

- The page presents a full-page, multi-panel gag layout arranged in a grid of small illustrated scenes.
- Each panel depicts brief character interactions, primarily involving repeated encounters and reactions between characters in domestic and outdoor settings.
- The artwork is printed primarily in black linework with red tonal shading used for background shapes and accents.
- Panels include scenes at a doorway, on stairs, near a sink, and in simple interior rooms, emphasizing everyday situations.
- The page layout is uncluttered, with generous margins around the panel grid.

## Indicia Information

- The indicia is printed at the bottom of the page in small black text.
- It identifies the comic as **Marge's Little Lulu, Vol. 1, No. 4**.
- The publication date is listed as **July 1948**.
- The publisher is listed as **Dell Publishing Co., Inc., 149 Madison Ave., New York, N.Y.**
- Printing and copyright information is included, crediting **Marjorie E. Buell** and noting U.S. and foreign copyright protections.
- The indicia confirms the book was **published monthly** and provides mailing and registration details typical of late-1940s Dell comics.

## Condition & Surface Characteristics

- Moderate overall age toning is visible across the page, especially toward the outer margins.
- Light edge wear is present but no tears, chips, or missing material are visible.
- Panel borders remain intact with no visible breaks.

## Color & Printing Quality

- Black linework remains sharp and clearly printed.
- Red background tones appear consistent, with slight softening from age but no major fading.
- Text in the indicia remains legible.

## Paper Condition

- Paper shows uniform oxidation consistent with late-1940s newsprint.
- The page remains flat and flexible with no signs of brittleness or moisture damage.

## Overall Impression

A well-preserved inside front cover with clearly legible indicia and intact gag artwork. Age-typical toning is present, but printing quality, paper integrity, and layout clarity remain strong for a 1948 Golden Age issue.

## Back Cover Observations

*Marge's Little Lulu Vol. 1 No. 4 (July 1948)*



**SUBSCRIBE NOW!**

*Marge's Little Lulu*

Published every other month, featuring Little Lulu, Tubby, and Alvin.

**2-Year Subscription (12 issues)**  
for only **\$1.00**

**1-Year Subscription (6 issues)**  
for only **60¢**



**Mail to: DELL PUBLISHING CO., INC., 149 MADISON AVE., N. Y. 16, N. Y.**  
Dept. 6-L.L.

PLEASE SEND MARGE'S LITTLE LULU to:

NAME \_\_\_\_\_ AGE \_\_\_\_\_

STREET AND NUMBER \_\_\_\_\_

CITY \_\_\_\_\_ STATE \_\_\_\_\_

\$1.00 for Two Years (12 issues)  
No Canadian subscriptions accepted

60c for One Year (6 issues)  
Foreign  \$1.00 for One Year (6 issues)

DONOR \_\_\_\_\_

ADDRESS \_\_\_\_\_

## Photo Validation

- The photo is clear, evenly lit, fully framed, and adequate for evaluation.

## Overall Scene & Composition

- The back cover is a full-page **subscription advertisement** dominated by large headline text reading “**SUBSCRIBE NOW!**” across the top.
- A single illustrated character stands on the right side of the page, pointing upward toward the headline.
- The layout is vertically structured, with promotional text occupying the left and center portions of the page and the character illustration balancing the right side.
- The design is simple and uncluttered, emphasizing readability and the call-to-action message.

## Condition & Surface Characteristics

- Moderate overall age toning is visible across the page, especially in the background areas.
- Edge wear is present along the outer margins, with light corner rounding.
- Small scattered surface marks and faint speckling appear but do not obscure text or artwork.
- No tears, folds, or missing material are visible.

## Color & Printing Quality

- Red headline lettering remains strong and clearly printed.
- Black text is crisp and legible throughout the subscription details.
- The illustrated figure’s colors remain solid with no visible ink bleed or misregistration.
- Overall print contrast remains good despite age.

## Paper Condition

- Paper shows uniform oxidation consistent with late-1940s newsprint.
- The sheet remains flat and flexible with no signs of brittleness.
- No moisture rippling, staining, or fiber lifting is visible.

## Overall Impression

A well-preserved early-era subscription back cover with clear typography, intact illustration, and only age-typical toning and edge wear. The page remains structurally sound and fully legible for a 1948 Golden Age issue.

---

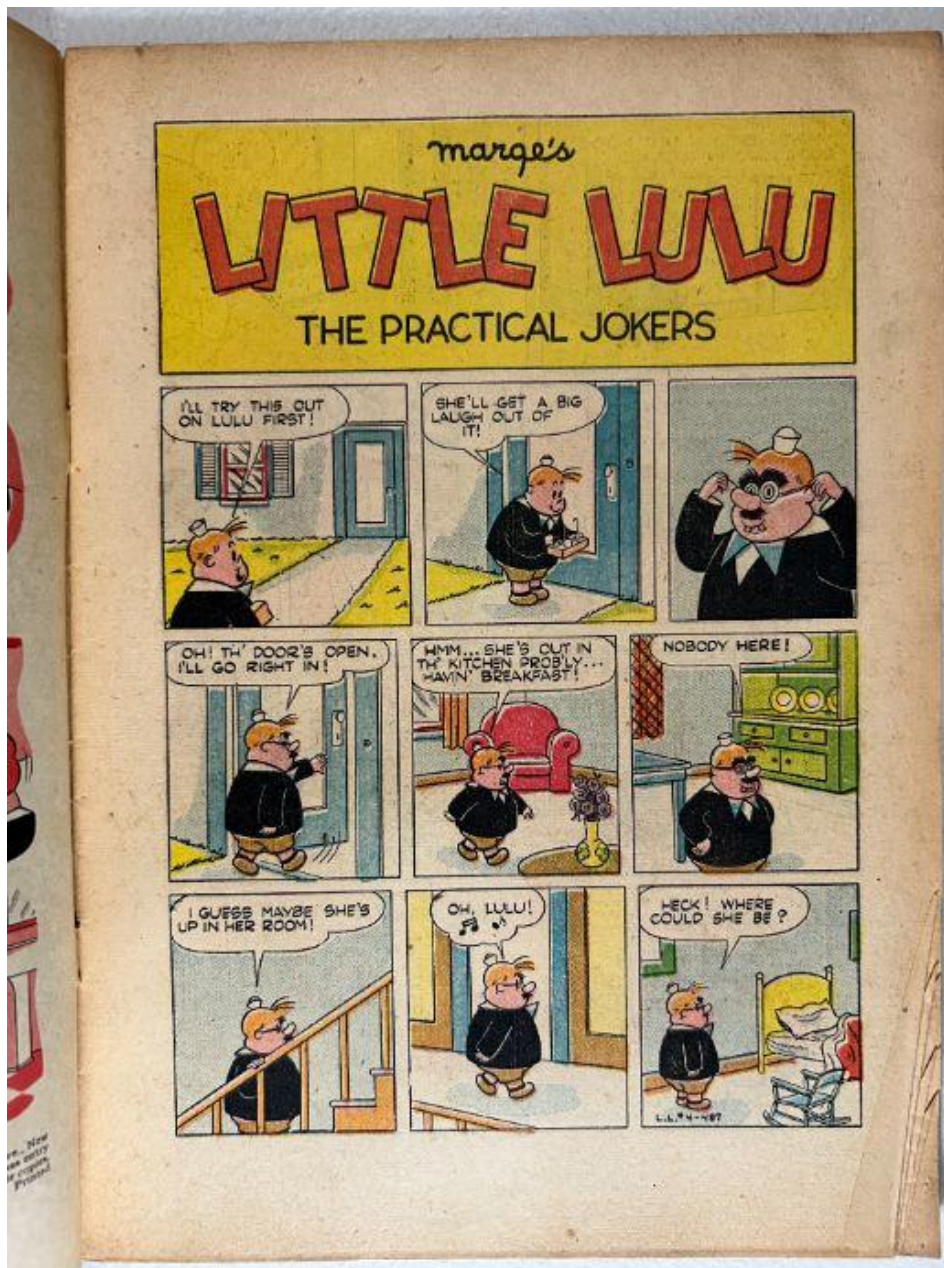
# Inside Pages Observations

Marge's Little Lulu Vol. 1 No. 4 (July 1948)

## Photo Validation

- The photos are clear, evenly lit, fully framed, and adequate for evaluation.

## Inside Page Set 1 – “The Practical Jokers”



## Overall Scene & Composition

- The page opens with a title banner reading **“Marge’s Little Lulu – The Practical Jokers.”**
- The story is presented in a grid of small panels depicting a character searching through a house, moving from doorway to doorway and checking different rooms.
- Scenes include interior hallways, a kitchen area, stairs, and a bedroom, with each panel advancing the search narrative.
- The layout is clean and evenly spaced, typical of late-1940s Dell humor storytelling.

## Condition & Surface Characteristics

- Moderate to heavy age toning is visible across the page, especially near the outer margins.
- Light edge wear is present, but no tears, chips, or missing material are visible.
- Panel borders remain intact and unbroken.

## Color & Printing Quality

- Colors remain stable, with reds, blues, yellows, and blacks clearly printed.
- Linework is sharp and consistent throughout all panels.
- Text in speech balloons remains legible.

## Paper Condition

- Paper shows uniform oxidation consistent with 1940s newsprint.
  - The page remains flat and flexible with no signs of brittleness or moisture damage.
-

# Inside Page Set 2



## Overall Scene & Composition

- This page depicts a group of characters gathered outdoors, discussing a plan and reacting to noises and movement.
- Panels show fence-lined yards, trees, a small shed, and a group approaching cautiously.
- A surprise moment occurs with a large **"BOO!"** panel, followed by reactions from the group.
- The sequence concludes with characters regrouping and discussing the outcome.

## Condition & Surface Characteristics

- Heavy toning is visible along the edges and gutter.
- Minor surface speckling appears in lighter background areas.
- No structural damage such as tearing or folding is present.

## Color & Printing Quality

- Colors remain vivid, particularly greens, reds, and blues.
- Linework is clean with no misregistration.
- Dialogue text remains crisp and readable.

## Paper Condition

- Paper remains flexible despite visible oxidation.
  - No staining, rippling, or fiber separation is observed.
-

# Inside Page Set 3 – “The Timid Ghost”



## Overall Scene & Composition

- The page opens with a title banner reading **“Marge’s Little Lulu – The Timid Ghost.”**
- The story shows a character preparing to be alone at home, moving through interior rooms such as a living room, bookshelf area, and bedroom.
- Panels depict reading ghost stories, imagining frightening scenarios, and reacting to perceived noises.
- The sequence maintains a calm, evenly paced progression typical of early Lulu stories.

## Condition & Surface Characteristics

- Uniform age toning is present across the page, heavier at the margins.
- No tears, chips, or missing material are visible.
- Panel borders remain intact.

## Color & Printing Quality

- Colors print evenly, with reds, yellows, greens, and blues still distinct.
- Linework remains sharp and consistent.
- Text is clear and fully legible.

## Paper Condition

- Paper is flat and flexible with no signs of brittleness.
- No moisture staining or rippling is visible.

---

## Overall Impression – Inside Pages

The interior pages are well preserved for a 1948 Golden Age comic, showing clear printing, intact panel structure, and flexible paper. While heavy age-typical oxidation is present, there are no structural defects such as tears, chips, or moisture damage. Artwork and text remain clean and readable throughout.



## Overall Scene & Composition

- The centerfold presents a two-page spread bridging two story segments.
- The left page concludes a story sequence with characters interacting around a wire cage outdoors, followed by a final panel showing the resolution and a printed **"The End."**
- The right page opens a new story titled **"Marge's Little Lulu — The Timid Ghost,"** displayed beneath a wide yellow title banner.
- Panels on the right page depict a domestic interior setting, with a character being reassured about staying alone, moving through rooms, and preparing for the evening.
- The layout uses evenly spaced rectangular panels, guiding the narrative smoothly from left-page conclusion to right-page introduction.

## Condition & Surface Characteristics

- Heavy, uniform age toning is visible across both pages, especially along the outer margins and gutter.
- Mild gutter darkening is present but the fold remains intact with no splitting or separation.
- Light surface speckling appears in lighter background areas but does not obscure artwork or dialogue.
- No tears, folds, or missing material are visible.

## Color & Printing Quality

- Colors remain clear and well-defined, including reds, yellows, blues, and greens.
- Linework is crisp and consistent across both pages with no visible misregistration.
- Title lettering and dialogue text remain sharp and legible.

## Paper Condition

- Paper remains flexible despite visible oxidation.
- No moisture rippling, staining, or fiber separation is evident.
- Page edges are intact with only mild rounding consistent with age.

## Overall Impression

A well-preserved centerfold showing clear storytelling transition, strong printing quality, and intact structure. Although heavy age-typical toning is present, both pages remain flexible, readable, and structurally sound for a 1948 Golden Age comic.

# Spine Observations

*Marge's Little Lulu Vol. 1 No. 4 (July 1948)*



## Photo Validation

- The photo is clear, side-angled, evenly lit, and fully framed, allowing the full spine profile to be evaluated.

## Overall Setting & Perspective

- The comic is positioned horizontally on a white wire rack, photographed from a low side angle that exposes the entire spine edge and the relationship between the front cover and interior pages.
- The rack supports the book evenly, keeping the spine visible without distortion or shadowing.

## **Spine Shape & Alignment**

- The spine appears generally straight with no pronounced spine roll.
- A gentle natural curvature is present, consistent with a saddle-stitched comic resting under its own weight.
- The front cover lies flush against the interior pages with no visible separation along the fold.

## **Spine Surface Condition**

- Moderate color thinning is visible along the spine fold, particularly where the blue cover ink meets the edge.
- Several fine vertical stress lines run along the fold, consistent with handling and repeated opening.
- No full-length spine splits or breaks are visible.

## **Staple Zone Condition**

- The staple positions are visible as subtle impressions beneath the cover paper.
- No tearing, paper separation, or staple pull-through is evident from this angle.
- No visible rust migration appears on the exterior spine surface in this view.

## **Edge & Corner Wear**

- Both the upper and lower spine corners show mild rounding and compression typical of age.
- No missing material or severe fraying is visible at the spine corners.

## **Overall Impression**

A stable and well-aligned spine showing age-typical wear, including color thinning and stress lines, but no roll, splitting, or visible staple failure. The spine remains structurally sound for a 1948 Golden Age comic.

# Staples Observations

*Marge's Little Lulu Vol. 1 No. 4 (July 1948)*

## Photo Validation

- The photos are clear, close-range, well-lit, and adequately show the staple areas and surrounding spine paper for evaluation.

## Upper Staple Area



- The upper staple is visible and seated within the spine fold.
- Moderate oxidation is present on the metal, appearing as darkened brown areas along the staple surface.
- Surrounding spine paper shows **localized tearing and fiber exposure**, including a short horizontal tear running along the spine edge at the staple level.
- The tear exposes underlying paper fibers but does not appear to extend deeply into the interior pages.

- Cover paper around the staple shows abrasion, color loss, and fraying consistent with age and repeated handling.
- No complete staple pull-through is visible, but the structural support at this point is weakened.

### Lower Staple Area



- The lower staple is visible and remains seated in the spine fold.
- Oxidation is present, though slightly less advanced than the upper staple.
- Surrounding paper shows edge wear, compression, and light fiber disturbance, but **no tearing or splitting** comparable to the upper staple area.
- The spine fold remains intact at the lower staple location with no separation.

### Overall Impression

The staple areas show **significant age-related wear**, with the most serious defect being the **localized tear and fiber loss at the upper staple**. Both staples remain present and seated, but oxidation and paper deterioration—especially at the upper staple—represent a meaningful structural weakness. Overall binding integrity is compromised but not fully failed, consistent with a low- to mid-grade 1948 Golden Age comic.

## Brittleness Test Observations

*Marge's Little Lulu Vol. 1 No. 4 (July 1948)*



### Photo Validation

- The photo is clear, close-range, well-lit, and adequately shows the page corner and paper response for brittleness evaluation.

## Overall View of the Test

- The image shows the lower outer corner of an interior page being gently lifted, revealing both the printed surface and the underlying page layers.
- The corner lift is shallow and controlled, consistent with proper brittleness-testing technique.

## Page Flex Response

- The page bends smoothly with a gradual curve rather than forming a sharp crease.
- No cracking, snapping, or visible fiber breakage occurs at the lifted edge.
- The corner maintains cohesion without splitting between layers.

## Color & Oxidation Indicators

- The paper displays deep tan oxidation consistent with late-1940s Dell newsprint.
- Oxidation appears uniform, with no dark moisture spots or tide marks.

## Surface Texture & Fiber Condition

- The paper surface appears dry and matte but does not show powdering or flaking.
- Edge fibers remain intact, with no feathering or granular breakup visible.

## Mechanical Stress Behavior

- The page resists slightly but flexes evenly under light pressure.
- The corner relaxes back naturally when released, showing retained elasticity.

## Overall Impression

The interior page shows **advanced oxidation** but remains **flexible and non-brittle**. Despite age and visible toning, the paper withstands a gentle corner lift without cracking or fiber failure, indicating stable paper condition for a 1948 Golden Age comic.