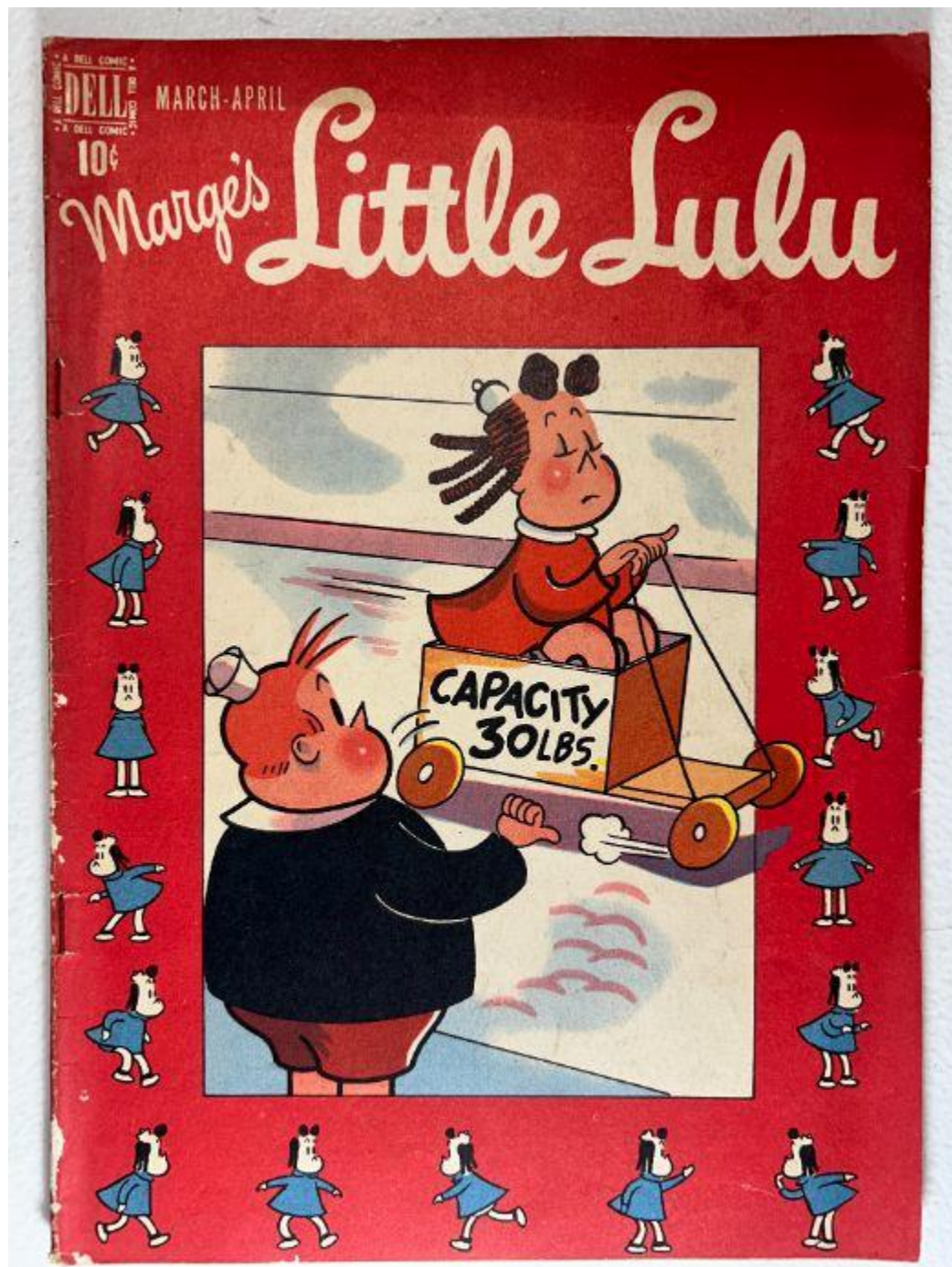


# Marge's Little Lulu Vol. 1 No. 2 — March–April 1948

Front Cover Observations

*Marge's Little Lulu Vol. 1 No. 2 — March–April 1948*



---

## Overall Scene & Composition

- The front cover has a solid red background with a decorative border of repeated small cartoon figures wearing blue dresses and white shoes.
- The central image depicts two illustrated characters: one standing behind a small wheeled cart labeled "**CAPACITY 30 LBS.**", and another character riding inside the cart while holding the handle.
- The title "**Marge's Little Lulu**" appears prominently across the top in large cream-colored script.
- The Dell Comics logo is shown in the upper-left corner alongside "10¢" and the issue period **MARCH-APRIL**.

## Condition & Surface Characteristics

- Spine shows multiple small areas of color loss and chipping, mainly concentrated near the top and bottom.
- Light abrasion and wear along the left edge, including small paper breaks.
- Moderate corner softening on the bottom-left and bottom-right corners.
- General surface wear visible across the red background with minor scuffing.
- No large stains or writing visible on the cover.

## Ink, Linework & Color Quality

- Colors remain bold and well-saturated, especially the red background and blue dress details.
- The main illustration retains sharp black linework.
- Minor fading on the lighter background areas of the central art panel.

## Paper Condition

- Slightly uneven surface texture visible, consistent with age-toning.
- No visible tears in the cover sheet.

---

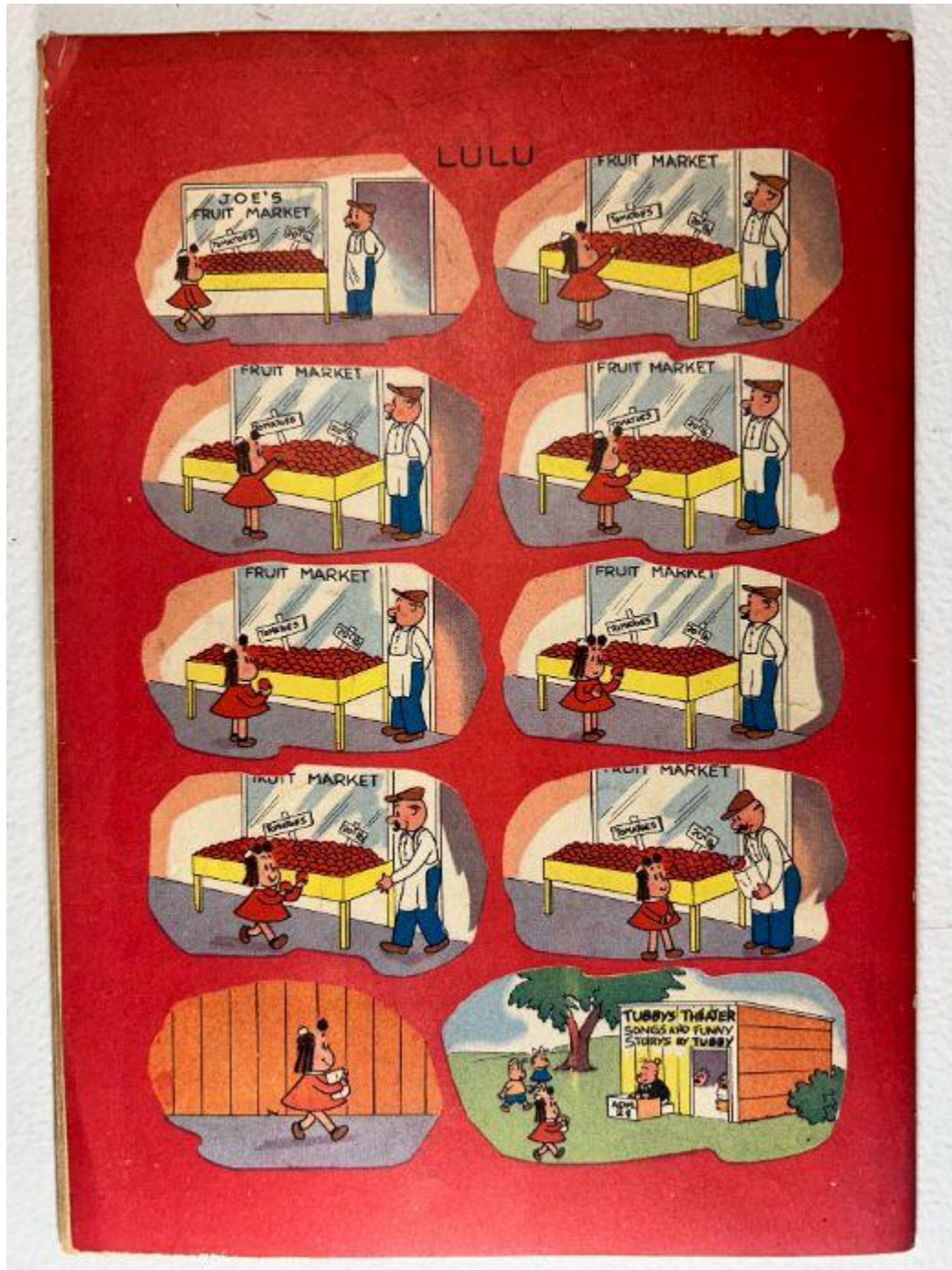
## Overall Impression

A structurally intact early Golden Age cover with bright colors but notable spine wear, light corner rounding, and scattered edge chipping. Despite age-related abrasions, the main artwork retains strong visual appeal.

---

Back Cover Observations

Marge's Little Lulu Vol. 1 No. 2 — March–April 1948



## Overall Layout & Scene Description

- The back cover features a **nine-panel humor sequence** arranged in three vertical columns.
- Each panel depicts a market stall labeled **"FRUIT MARKET"**, with a vendor behind a display table and a character interacting with the stall.
- The topmost panel shows a storefront sign that reads **"JOE'S FRUIT MARKET."**
- The panels appear to illustrate a repeating gag involving produce and customer exchanges.

## Bottom Panels

- The final two panels depart from the market setting:
  - One panel shows a character walking past a plain orange-toned wooden fence.
  - The last panel shows a stand labeled **"TUBBY'S MARKET — BARGAINS GALORE — OPERATED BY TUBBY."** Additional small text on the stand reads **"POP CORN 5¢."**
- The background includes simple green grass areas and a tree.

## Condition & Surface Wear

- The spine edge shows visible friction wear extending slightly onto the back cover.
- Upper spine corner shows moderate chipping and small paper loss.
- Light abrasion visible across the red background, especially along the right edge.
- Minor surface indentations and gentle handling marks present.
- Top edge shows small scattered color breaks.

## Color & Line Integrity

- Colors remain well-saturated, with strong reds and clean tonal transitions within the cartoon panels.
- No major color fading, though some minor dulling is present along high-touch areas.
- Black linework in the illustrated panels remains clear.

## Paper Condition

- Even, natural age toning across the back cover.
  - No significant creasing or folding observed.
  - No tears or punctures visible.
-

Overall Impression

A clean and visually appealing back cover featuring bright artwork and intact color composition. Typical Golden Age spine wear and edge abrasion are present, particularly along the top spine corner and left edge. The cover retains strong eye appeal with no major structural defects.

Inside Front Cover Observations

Marge's Little Lulu Vol. 1 No. 2 — March–April 1948



---

## Overall Layout & Artwork

- The inside front cover presents a **12-panel red-and-white humor sequence**, each panel enclosed within irregular rounded shapes.
- The panels depict a small character performing actions in a striped interior setting, including interacting with household items, a window, and a plate of food.
- The word "**ALVIN**" is printed at the top center above the sequence in uppercase black lettering.
- The bottom margin contains the **Dell Publishing indicia**, including issue details, printing information, and copyright text.

## Condition & Surface Wear

- The page exhibits **heavy, uniform oxidation**, transitioning from medium tan near the edges to darker brown along the upper margin and gutter.
- Noticeable darkening along the top edge and right margin suggests prolonged age exposure typical of 1940s newsprint.
- Slight waviness is visible along the outer edge but no moisture rippling is present.
- No tears or chips are observed along the page edges or gutter.

## Linework & Print Quality

- The red ink remains reasonably strong despite aging, with clear halftone patterns visible.
- Black linework retains integrity across all panels, including facial outlines and object details.
- No significant ink smearing or misregistration is present.

## Paper Integrity

- No visible brittleness cracks or flakes at the lifted page corner (right side of image).
- Page texture shows mild dryness consistent with Golden Age oxidation.
- Structural integrity of the sheet remains solid with no signs of tearing at the gutter.

---

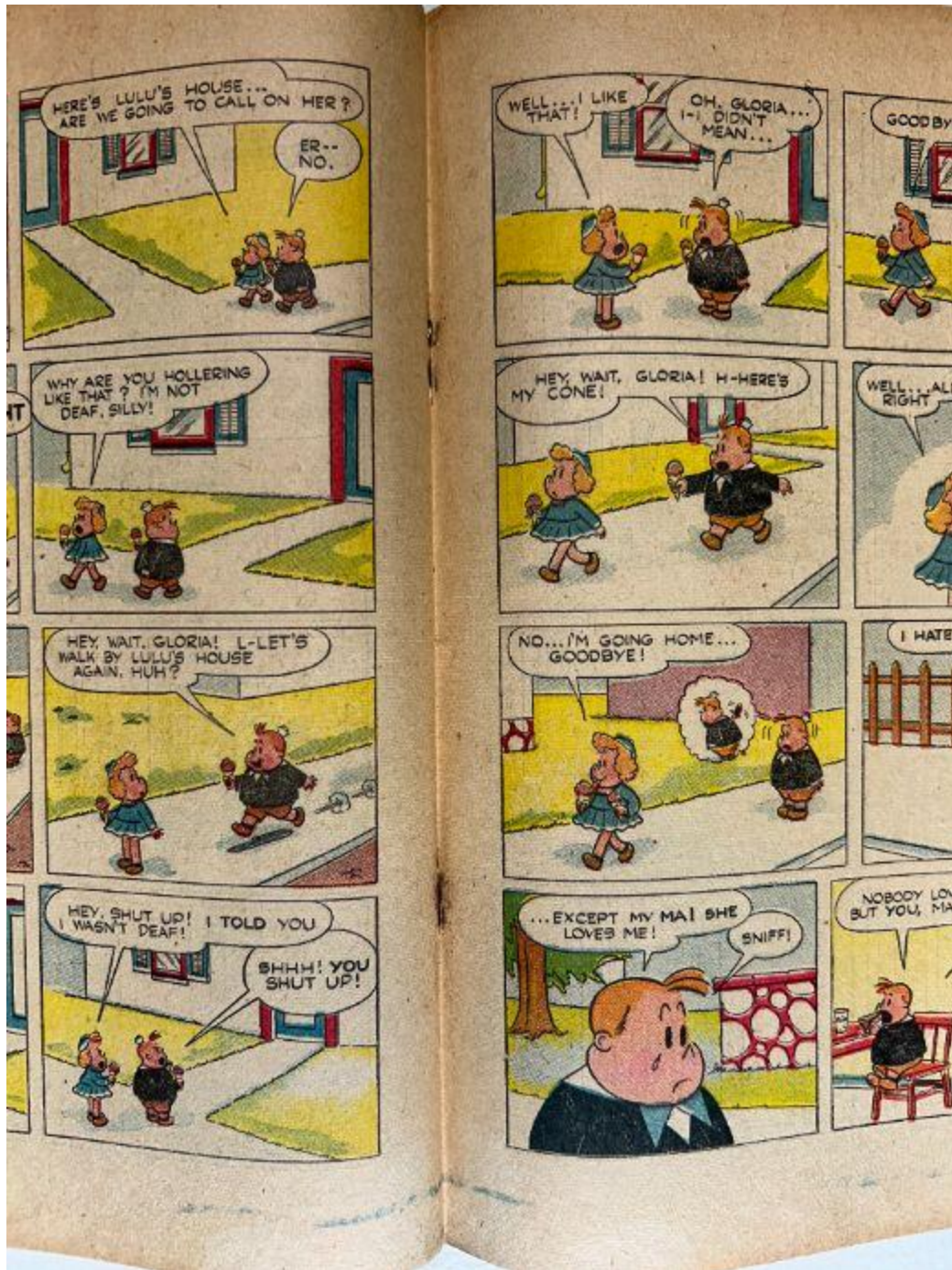
## Overall Impression

A well-preserved inside front cover for a 1948 issue, showing expected—but not severe—Golden Age toning. Artwork remains sharp and fully legible, with no mechanical damage. Oxidation is the primary condition factor, but the page remains structurally sound.

---

Centerfold Observations

Marge's Little Lulu Vol. 1 No. 2 — March–April 1948



## **Overall Layout & Structure**

- The centerfold consists of two full pages forming a continuous comic sequence.
- Panels are arranged in a standard multi-row layout with speech balloons clearly printed.
- Gutters and panel borders remain intact with no tears or missing material.
- The story features multiple characters interacting in outdoor scenes and walkways, including exchanges involving ice cream cones and conversations between characters.

## **Color & Print Quality**

- The color palette is consistent with late-1940s Dell printing: muted yet saturated primaries with visible halftone dot patterns.
- Colors remain strong in character clothing and outdoor scenery.
- Slight fading is present along the top margins where oxidation is heaviest.
- Black linework remains intact with no significant misregistration, ghosting, or ink spread.

## **Paper Aging & Oxidation**

- Heavy uniform toning is visible across both pages, with the edges—particularly upper and outer margins—darkening into medium-brown.
- The central gutter shows darker oxidation, typical of Golden Age newsprint aging.
- No visible brittleness cracking at the fold, though paper dryness is apparent.
- The interior fold shows natural waviness but no splitting or tearing.

## **Structural Condition**

- The centerfold is firmly attached at both staple positions, with no pulling, tearing, or looseness visible in the scanned area.
- Minor wrinkles radiate outward from the spine but do not affect structural integrity.
- Page alignment is slightly uneven at the bottom due to natural aging and handling.

## **Surface & Handling Wear**

- Light handling impressions are present but minimal.
  - No stains, spills, or writing observed.
  - Slight discoloration immediately adjacent to the spine results from extended absorption of aged glue and oxidation from the staples.
-

## ☑ Overall Impression

A strong, intact centerfold showing heavy but typical Golden Age toning with a solid attachment at the spine. Colors remain vibrant, linework clear, and no structural defects such as tears, splits, or brittle edges are visible. This is a well-preserved interior for a 1948 issue.

---

## ☑ Inside Pages Observations

*Marge's Little Lulu Vol. 1 No. 2 — March–April 1948*

---

## ☑ Inside Page Set 1

*(First photo in this group – continuation of the centerfold story)*



### **Artwork & Panel Layout**

- Full-page multi-panel sequence continuing the emotional dialogue between two characters.
- Uniform rectangular panel layout with clear black borders and readable speech balloons.
- Scene settings include house exteriors, walkways, grassy yard areas, and simple wooden fencing.
- Characters remain well-delineated with bold lines and consistent halftone coloring.

### **Color & Printing**

- Strong color retention despite age; blues, reds, and greens remain vivid.
- Mild fading toward the upper margin where toning is heavier.
- Halftone dot patterns are visible but stable—no major registration shifts.

### **Aging & Paper Condition**

- Heavy oxidation with edges showing brown-toned darkening.
- Gutter region shows typical darkened toning but no tearing or splitting.
- Page remains flexible; no visible brittleness cracks.

### **Wear & Handling**

- Light surface impressions present but minor.
- No stains, writing, moisture ripples, or page tears visible.

### **Overall Impression**

A structurally strong interior page with heavy but normal Golden Age toning. Color and linework remain sharp, and the page shows no mechanical damage.

---

## ☑ Inside Page Set 2

(Second photo in this group – scene involving flowers, cake, and outdoor walkway)



### **Artwork & Scene Description**

- Multi-panel humor sequence featuring household interior scenes, a yard setting, and a walkway.
- Speech balloons are crisp and fully legible.
- Panel borders are sharp without breaks.

### **Color & Ink Quality**

- Colors remain well-defined, though slightly muted due to age-darkening.
- Darker areas still show good saturation with no significant ink lift.
- Backgrounds retain clarity in both interior and exterior scenes.

### **Structural & Paper Condition**

- Toning increases toward the outer margins, but the core reading area remains lighter.
- No tears, chips, or creases evident.
- Page edges show mild waviness from long-term oxidation rather than moisture.

### **Other Notes**

- No stains, pencil marks, crayon, or erasures appear anywhere on the page.

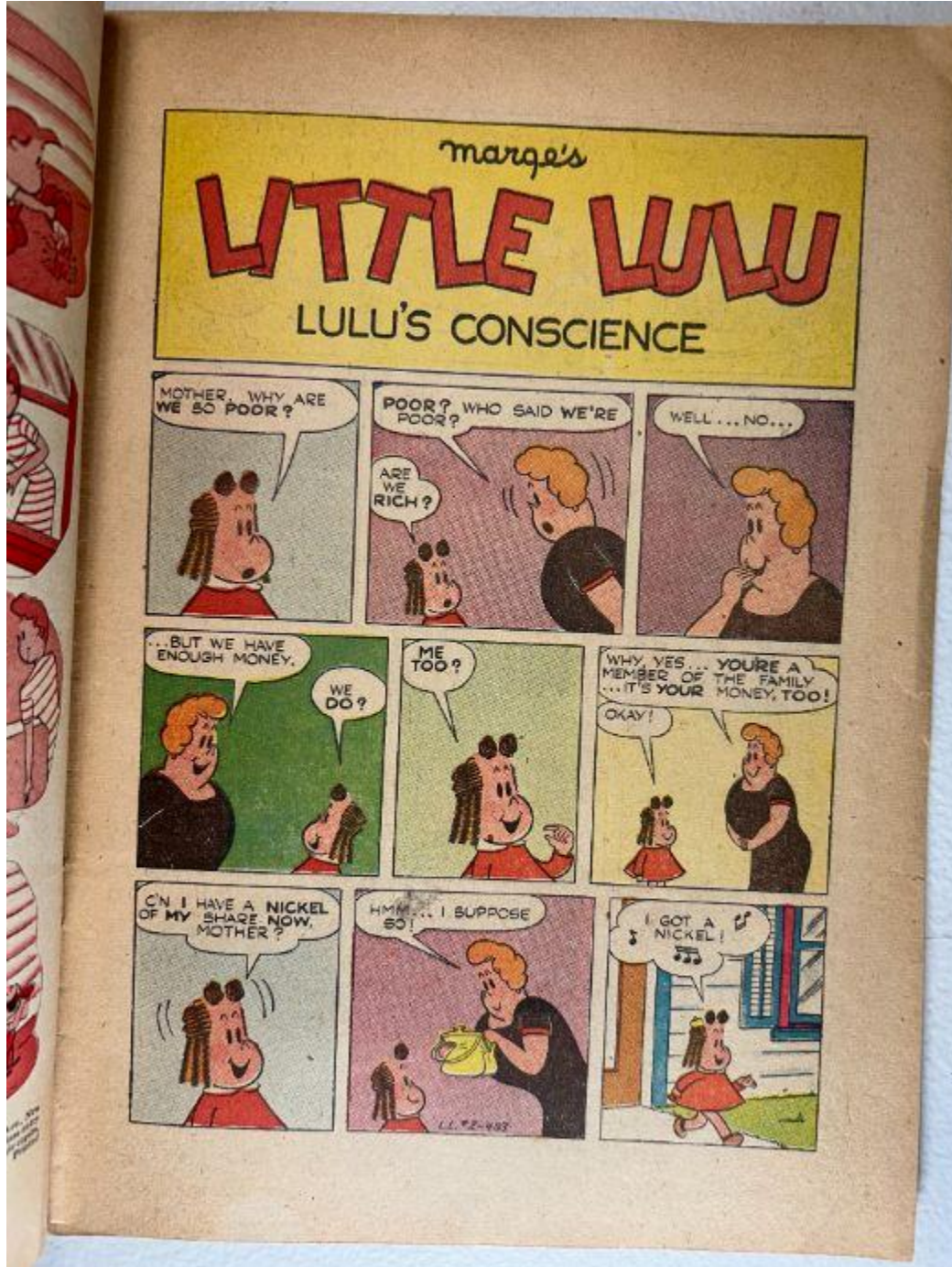
### **Overall Impression**

A stable, well-preserved interior page with strong visual clarity. Aging is present but even, and there are no structural issues.

---

☑ Inside Page Set 3

(Third photo — first page of the main story "Lulu's Conscience")



## Artwork & Layout

- Title banner “**Lulu’s Conscience**” appears at the top with bold yellow background.
- Page contains eight uniform panels with consistent linework and clearly printed text.
- Characters and backgrounds are rendered cleanly with good registration.

## Color & Halftone Quality

- The header retains very strong saturation, especially the bold yellow and red.
- Panel colors show moderate fading due to oxidation but remain clearly readable.
- Halftone patterns are visible throughout but stable and intact.

## Paper Toning & Condition

- Heavy oxidation across the entire sheet, more pronounced at edges and upper margin.
- Slight darkening in the gutter due to long-term exposure.
- No structural tearing or splitting visible at the gutter fold.
- Page appears flat with minimal handling impressions.

## Cleanliness

- No stains, scribbles, or moisture artifacts.
- No signs of mold, odors, or dirt accumulation.

## Overall Impression

A strong story-open page with excellent title-banner color and well-preserved artwork. Aging is prominent but consistent and not damaging. The page remains clean, flat, and firmly attached.

---

Spine Observations

*Marge's Little Lulu Vol. 1 No. 2 — March–April 1948*



---

**Overall View & Angle**

- The comic is photographed lying across a white wire rack, viewed from the spine edge at a low side angle.
- This angle clearly exposes the spine surface and part of the front cover while keeping the book in its natural, uncompressed state.

### Spine Surface Condition

- The spine shows **multiple small areas of color loss**, typical of a 1940s saddle-stitched comic with handling wear.
- Several **tiny edge chips** are visible along the mid-spine, with slightly larger abrasions near the bottom portion.
- The red background ink on the spine is worn unevenly, revealing lightened areas consistent with rub wear.

### Spine Shape & Structural Alignment

- The spine appears **straight**, with no significant rolling to the front or back.
- There is a mild **natural curvature** from age and reading but nothing that suggests structural distortion.
- No visible warping, crushing, or flattening is present along the spine line.

### Staple Visibility & Condition

- The angle does not fully expose the staple heads, but:
  - The **upper staple area** shows a small abrasion indicating slight paper pull but no tearing.
  - The **lower staple region** appears intact without noticeable warping of the spine fold.
- No staple rust is visible from this angle.

### Cover-to-Spine Connection

- The front cover remains securely attached with no lifting or separation from the spine fold.
- Minor micro-flakes along the fold indicate normal Golden Age aging but no structural risk.

### Edge & Corner Details

- Bottom spine corner shows **visible blunting** and a tiny chip.
- Top spine corner shows moderate wear but retains its structure without splitting.

---

### Overall Impression

A stable and well-preserved Golden Age spine with typical 1940s wear: light chipping, small abrasions, and moderate color loss. The spine remains straight with no splits or detachment, and both staples appear secure. Overall, the spine condition is consistent with a handled but structurally sound 1948 Dell comic.

Staples Observations

*Marge's Little Lulu Vol. 1 No. 2 — March–April 1948*



---

## Upper Staple Area (First Photo)

### Staple & Spine Behavior

- The staple itself is **not directly visible** in the photo, but the **staple slot** and surrounding paper provide clear structural clues.
- The staple slot shows **slight widening**, indicating minor long-term stress at the fold.
- A **fine vertical spine crease** intersects the staple zone, consistent with natural handling and page-turning over decades.

### Paper Condition Around the Staple

- Small **paper cracks** appear at both ends of the staple opening.

- The crack directly above the slot is slightly larger, showing where the paper fibers have separated under tension.
- No tearing extends outward into the cover art.
- Light edge chipping is present nearby, typical of Golden Age cover stock aging.

### Cover Surface Condition

- Surrounding red areas show **light color wear** and tiny flecks of abrasion.
- The small character illustrations remain intact with no ink loss affecting their outlines.

---

### Lower Staple Area (Second Photo)



### Staple & Fold Integrity

- The second staple slot is more cleanly defined, with **less widening** than the upper slot.
- A small spine crease crosses the staple zone but does not appear to compromise attachment.
- No visible staple rust from the exterior.

### Paper Condition Around the Staple

- A **short vertical crack** appears just above the staple opening, caused by natural spine flexing.
- Lower edge of the slot shows a tiny chip, but there is **no structural tearing** extending into the cover.

### Surface Wear

- Moderate friction wear and small abrasions appear along the lower spine edge, but the artwork surrounding the slot remains unaffected.
  - Minor white flecks suggest normal aging and shelf wear.
- 

### Overall Impression

Both staple stations show **typical Golden Age wear**—small paper cracks, mild slot widening, and scattered edge abrasions—but **no detachment, no heavy tearing, and no rust migration** are visible. These staples remain **structurally secure**, and the wear is fully consistent with a 1948 saddle-stitched Dell comic that has been read but handled reasonably well.

---

Brittleness Test Observations

*Marge's Little Lulu Vol. 1 No. 2 — March–April 1948*



## Page Flex Response

- The lifted lower-corner shows **stiff, resistant flexing**, a common characteristic of 1940s newsprint that has undergone heavy lignin oxidation.
- The page does **not** bend with a smooth arc; instead, it forms a firm, semi-rigid curve that suggests advanced dryness.
- Even with this stiffness, the paper does **not crack, split, or flake**, which indicates that it has not yet reached fully brittle status.

## Color & Oxidation Indicators

- The paper tone is a **deep tan-brown**, especially toward the edges—an unmistakable sign of long-term oxidation.
- The darker upper margin visible in the background confirms differential aging with more significant exposure near the outer edges.
- The interior artwork retains color, but the surrounding margin's tone shows the comic is at the high-end of oxidation severity for late-1940s Dell books.

## Surface Texture & Fiber Condition

- The lifted page exhibits a slightly **granular, matte texture**, typical of aged, dried fibers.
- No flaking is visible along the bend line, suggesting the fibers are dry but still intact.
- The page shows minor waviness from oxidation, not moisture.

## Mechanical Stress Behavior

- The point at which the page transitions from flat to lifted forms a pronounced **crease ridge**, which indicates the paper is close to the brittleness threshold.
- However, no audible crack or visible micro-fracture appears in the photo.

---

## Overall Impression

The brittleness test indicates **advanced oxidation** with **stiff, fragile paper** that is approaching—but has not yet reached—true brittleness. The page can still flex without breaking, but the fiber rigidity is notable. Handling should be gentle, as additional stress may cause cracking in the future.